

7-1-2013

การพัฒนาเครือข่ายการบริหารเครือข่ายมหาวิทยาลัยราชภัฏ กลุ่มภาคกลาง Development Network Administration Model of Rajabhat University Central Area Group

วิวัฒน์ คสังวิจิตร

Follow this and additional works at: <https://digital.car.chula.ac.th/educujournal>



Part of the [Education Commons](#)

Recommended Citation

คสังวิจิตร, วิวัฒน์ (2013) "การพัฒนาเครือข่ายการบริหารเครือข่ายมหาวิทยาลัยราชภัฏ กลุ่มภาคกลาง Development Network Administration Model of Rajabhat University Central Area Group," *Journal of Education Studies*: Vol. 41: Iss. 3, Article 14.

Available at: <https://digital.car.chula.ac.th/educujournal/vol41/iss3/14>

This Article is brought to you for free and open access by Chula Digital Collections. It has been accepted for inclusion in Journal of Education Studies by an authorized editor of Chula Digital Collections. For more information, please contact ChulaDC@car.chula.ac.th.

การพัฒนารูปแบบการบริหารเครือข่ายมหาวิทยาลัยราชภัฏ กลุ่มภาคกลาง

Development Network Administration Model of Rajabhat University Central Area Group

วิวัฒน์ คลังวิจิตร

บทคัดย่อ

การวิจัยครั้งนี้มีวัตถุประสงค์เพื่อพัฒนารูปแบบการบริหารเครือข่ายมหาวิทยาลัยราชภัฏกลุ่มภาคกลางการดำเนินการวิจัยมี ๒ ขั้นตอนคือ ๑) การวิเคราะห์เอกสารเกี่ยวกับแนวทางการบริหารเครือข่ายของสถาบันอุดมศึกษาของประเทศไทยและต่างประเทศ ๒) การพัฒนารูปแบบการบริหารเครือข่ายมหาวิทยาลัยราชภัฏกลุ่มภาคกลางโดยใช้เครื่องมือในรวบรวมข้อมูลคือ แบบสอบถามความคิดเห็นต่อการบริหารเครือข่ายมหาวิทยาลัยราชภัฏกลุ่มภาคกลางที่มีองค์ประกอบในการบริหาร ซึ่งมีค่าความเชื่อมั่นเท่ากับ .๙๔ การเก็บรวบรวมข้อมูลใช้แบบสอบถามความคิดเห็นต่อการบริหารเครือข่ายมหาวิทยาลัยราชภัฏกลุ่มภาคกลางกับกลุ่มตัวอย่าง คือ บุคลากรจากมหาวิทยาลัยราชภัฏกลุ่มภาคกลางตอนบน จำนวน ๓๗๖ คน จำแนกเป็น บุคลากรสายบริหาร ๑๕๒ คน บุคลากรสายสอน ๒๒๔ คน และเก็บแบบสอบถามกลับมาเป็นบุคลากรสายบริหาร ๑๒๙ คน บุคลากรสายสอน ๑๙๐ คน รวมทั้งหมด ๓๑๙ คน คิดเป็นร้อยละ ๘๕ การวิเคราะห์ข้อมูล ค่าเฉลี่ย ส่วนเบี่ยงเบนมาตรฐาน ระดับความคิดเห็นใช้เทคนิคการสนทนากลุ่มเพื่อสังเคราะห์รูปแบบการบริหารเครือข่ายมหาวิทยาลัยราชภัฏกลุ่มภาคกลางที่มี ๗ องค์ประกอบที่สำคัญในการดำเนินงานการบริหารงานแบบเครือข่ายมหาวิทยาลัยราชภัฏกลุ่มภาคกลาง คือ ๑) กำหนดวัตถุประสงค์ที่วัดได้ ๒) มีความผูกพันภายในกลุ่มลักษณะเป็นพันธมิตรร่วมกัน ๓) กำหนดภารกิจและเป้าหมายที่ใช้ร่วมกัน ๔) จัดตั้งคณะกรรมการดำเนินงานร่วมกัน ๕) กำหนดการสื่อสารและรายงานการทำงานของกลุ่มต้องยึดหลักธรรมาภิบาล ๖) ความไว้วางใจและความเคารพการตัดสินใจของพันธมิตร ๗) ต้องแบ่งปันทรัพยากรและช่วยเหลือกันในกลุ่มผลการประเมินรูปแบบการบริหารงานเครือข่ายมหาวิทยาลัยราชภัฏกลุ่มภาคกลาง มีความเป็นไปได้ ความมีประโยชน์ ความเหมาะสม และความถูกต้องของรูปแบบในระดับมาก

Abstract

The objective of this research is to develop a network administration model for the Central region Rajabhat university group. The research was conducted in two phases: 1) Analysis of documents on approaches to the administration of higher education institute networks in Thailand and overseas; 2) Development of a network administration model for the Central region Rajabhat university group based on the collected questionnaire data on attitudes toward network administration of the Central region Rajabhat university group with a confidence level of .94 for their administrative elements. The principal method of data collection was the questionnaire asking for opinions on network administration of the Central region Rajabhat university group collected from selected sample groups. A total of 376 questionnaires were sent to 152 people in administrative positions and 224 people in teaching positions. The questionnaire return rate was 129 and 190 respectively. Overall, 319 questionnaires or 85% of the distributed questionnaires were returned. The questionnaire data were subsequently analyzed to determine the means and standard deviation values of the opinions given in the questionnaires. Focus group techniques were also employed and data from both methods were synthesized to develop an administrative model for the Central region Rajabhat university group. The proposed model comprises seven major administrative elements: 1) Measurable objectives; 2) Partnership commitments; 3) Shared missions and goals; 4) Joint working committees; 5) Communication channels and operational outcome reporting based on the principle of good governance; 6) Trust and respect of partner's decisions; 7) Resource sharing and mutual assistance. Subsequent evaluation of the proposed model for network administration of the Central region Rajabhat university group found it to be highly feasible, useful, appropriate and accurate.

คำสำคัญ: การบริหารเครือข่าย, องค์ประกอบ

Keywords: NETWORK ADMINISTRATION / ELEMENTS

Introduction

It is the policy of the Office of the Higher Education Commission(OHEC), under the Ministry of Education, to develop higher education networks in Thailand as effective means to solve academic problems currently faced by the Thai higher education institutes. These problems include a shortage of teaching personnel, appropriate incentives to attract Ph.D. holders to a teaching career in higher education, and development of appropriate higher education information systems. Suitable format for higher education institute network administration will have the following benefits: 1. Facilitate the sharing of information, news, skills, knowledge and experiences among network members; 2. Encourage the sharing of information, news and collaboration to minimize overlapping operations and resource utilization; 3. Effectively connect people at different levels of responsibilities with different backgrounds, work/organizational management styles together; 4. Bring people and organizations interested in similar goals and faced similar problems to work together; 5. Effectively pressure the government to respond to people's needs; 6. Match relevant academic units and sources of funding to those who need their assistance; 7. Create mutual assistance from alliance institutes. The operations of

higher education networks are generally determined by the following missions required of higher education institutes: 1. Instruction; 2. Academic and research works; 3. Academic and technological services; 4. Services to local communities; 5. Network publicity. Previous operations of higher education institute networks were faced with the following problems: 1. Absence of some institutes in network meetings; 2. Change of high-rank administrators with decision making power (such as university president); 3. Large number of responsible officers or liaison persons; 4. Frequent change of institute representatives at network meetings; 6. No concrete cooperation as required by network missions; 7. Inadequate interaction; 8. Limited and ill-defined budget allocation. Most budgets are urgently allocated at the initial stage of an operation only; 9. Network operations are usually not on the top of an institute's priority list. As a result, network members have not been able to efficiently fulfill their missions in producing quality graduates as expected by the public. These problems are present among the Central region Rajabhat university group which comprises of Phranakhon Rajabhat University, Chandrakasem Rajabhat University, Thepsatri Rajabhat University, Phranakhon Si Ayutthaya Rajabhat University, Valaya Alongkorn

Rajabhat University, Suan Sunadha Rajabhat University, and Suan Dusit Rajabhat University. To improve the network administration efficiency of the Central region Rajabhat university group, suitable administrative approaches need to be identified. Documentary research on higher education networks in Thailand and overseas was conducted in order to identify appropriate model for more effective and efficient network administration. The following procedures were implemented to develop an appropriate network administration model for the Central region Rajabhat university group. 1. Interviewing network administration specialists, administrators of higher education institutes, and external members of the university executive boards; 2. Collecting their opinions on network administration of the Central region Rajabhat university group; 3. Preparing a draft of a network administration model for the Central region Rajabhat university group; 4. Examining and evaluating the drafted network administration model for the Central region Rajabhat university

group; 5. Revising and submitting of the proposed network administration model for the Central region Rajabhat university group. It is expected that this network administration model will produce graduates with international standard quality and result in the empowerment of communities and the Thai society. It will also generate sustainable development and more effective administration of Thai higher education institutes.

Research Objectives

1. To study network administration approaches for higher education institutes in Thailand and overseas.

2. To develop a suitable network administration model for the Central region Rajabhat university group.

Research Framework

Conceptual frameworks for the development of a network administration model for the Central region Rajabhat university group are illustrated in Figure 1.

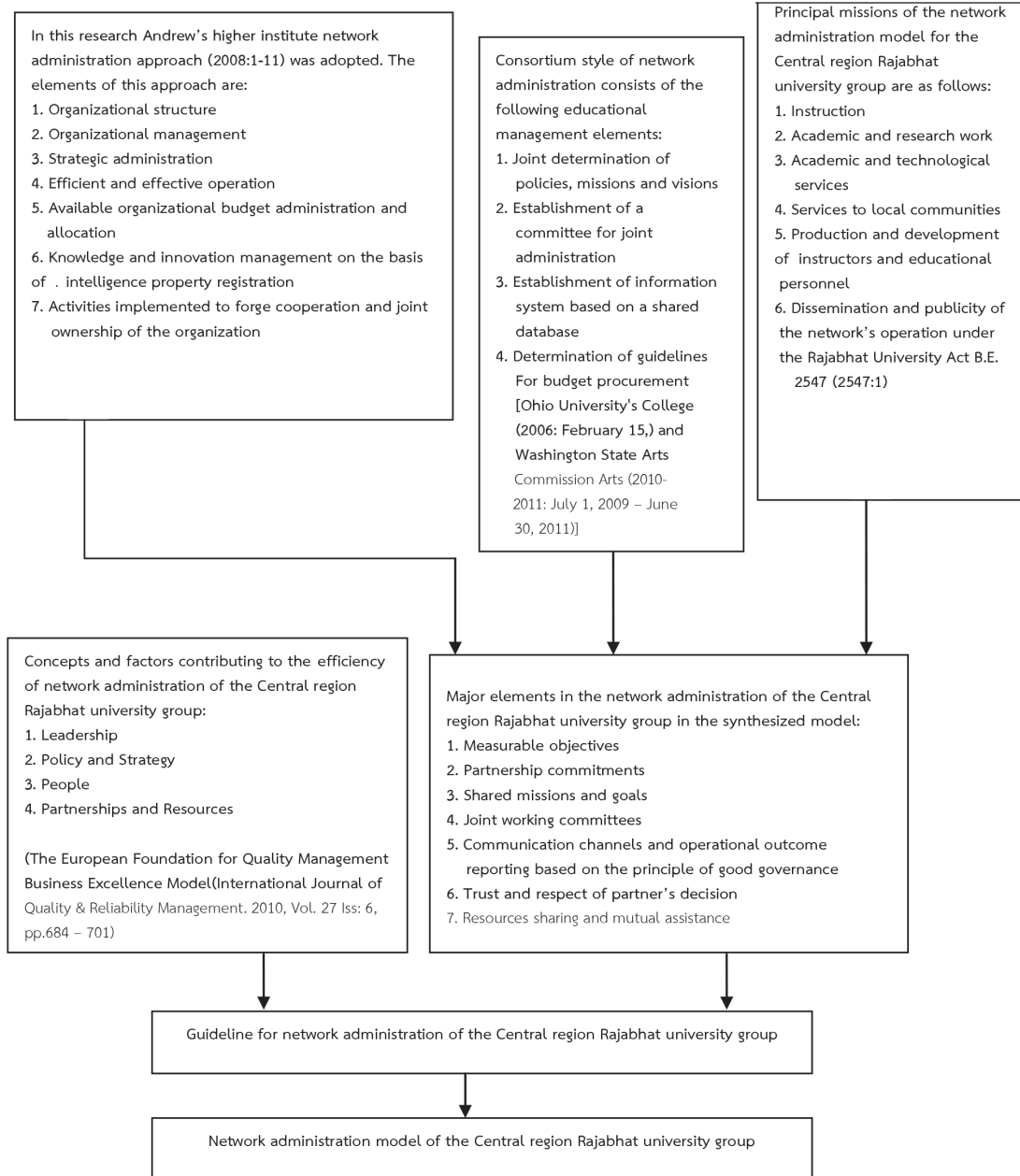


Figure 1: Conceptual frameworks for the development of a network administration model for the Central region Rajabhat university group

Research Methods

The research was conducted in two phases:

Phase 1 – The following procedures were implemented to examine various approaches to the administration of higher education network in Thailand and overseas:

1. Data sources – Documents, articles and researches on the administration of higher education network in Thailand and overseas.

2. Data collection tools – Questionnaires on opinions on current network administration of the Central region Rajabhat university group

3. Data collection method – Distribution of questionnaires on opinions on current network administration of the Central region Rajabhat university group to selected subjects, which consisted of 376 personnel of the upper Central region Rajabhat university group -- 152 questionnaires for personnel in administrative positions and 224 questionnaires for personnel in teaching positions. A total of 319 questionnaires or 85% of the questionnaire distributed were returned: 129 from personnel in the administrative positions and 190 from the teaching positions respectively.

4. Data analysis and Statistics Devices to determine the means, standard

deviation, and opinion levels of the collected data

4.1 CVR (Lawshe, CH 1975: 563-575) was used to analyze the content concerning the opinions on current network administration of the Central region Rajabhat university group

4.2 The data from the questionnaire, opinions on current network administration of the Central region Rajabhat university group was analyzed using Best's mean (\bar{X}), and standard deviation.

4.3 The data from the questionnaire, opinions on current network administration of the Central region Rajabhat university group was analyzed using Best's mean (\bar{X}), and standard deviation, as shown below:

4.50 – 5.00 = agree at the highest level

3.50 – 4.49 = agree at a high level

2.50 – 3.49 = agree at a medium level

1.50 – 2.49 = agree at a less level

1.00 – 1.49 = agree at the least level

Phase 2 – Development of a network administration model for the Central region Rajabhat university group

1. Interviews of specialists on their opinions on the elements of the Central region Rajabhat university group network administration. The interviewed subjects in this category were three university presidents or vice-presidents, six specialists in network

administration, four members of the university network administrative committee. All 13 interview subjects were selected by purposive sampling technique.

2. Drafting of a network administration model for the Central region Rajabhat university group. The drafting procedures included:

1. Synthesized the research findings in Phase 1 and used them as the basic data for the drafting of the model.

2. Drafted the network administration model for the Central region Rajabhat university group.

3. Submitted the network administration model for the Central region Rajabhat university group draft to the thesis advisor and co-advisor for consideration.

4. Revised the network administration model for the Central region Rajabhat university group draft based on suggestions from the thesis advisor and co-advisor.

3. Organized focus group session(s) to examine the network administration

model for the Central region Rajabhat university group draft. The informant group:

Purposive sampling technique was used to select 11 authorities to examine the network administration model for the Central region Rajabhat university group draft.

Research Results

Research findings:

1. Direction for the administration of the Central region Rajabhat university group network

1.1 Major elements of the operation are: 1. Measurable objectives; 2. Partnership commitments; 3. Shared missions and goals; 4. A joint working committee; 5. Communication channels and operational outcome reporting based on the principle of good governance 6. Trust and respect of partner's decision; 7. Resources sharing and mutual assistance.

Research findings on opinions of personnel in administrative and teaching positions on the network administration

Table 1: Research findings, means, standard deviation and opinion levels of personnel in administrative and teaching positions on network administration.

Principal elements in the network administration	n = 319		
	\bar{X}	S.D	Opinion levels
1. Measurable objectives such as academic objectives	4.23	.816	High
2. Partnership commitments	4.13	.966	High
3. Shared missions and goals	4.22	.843	High
4. A joint working committee	4.17	.788	High
5. Communication channels and operational outcome reporting based on the principle of good governance	4.24	.784	High
6. Trust and respect for partner's decision	4.07	.809	High
7. Resource sharing and mutual assistance	4.30	.730	High
Total	4.19	.819	High

Table 1 indicates that the overall opinions of university personnel on the network operation is quite high ($\bar{X} = 4.19$). When considered individually, the means for each element range from 4.07 to 4.30 with the highest means in Element 7 – Resource sharing and mutual assistance (= 4.30), This is followed by Element 5 – Communication channels and operational outcome reporting based on the principle of good governance ($\bar{X} = 4.24$), Element 1 – Measurable objectives ($\bar{X} = 4.23$) while Element 6 –

Trust and respect of partner's decision has the lowest means ($\bar{X} = 4.07$).

1.2 Factors contributing to efficient administration are: leadership, policy and strategy, people, partnership and resources. Implementation of the model must include the P-D-C-A cycle for quality control. The outcome of the proposed network administration model is an efficient higher education network administration.

Research findings on opinions toward the network administration

Table 2: Means, Standard deviation and opinion levels on factors contributing to the success of network administration

Principal elements in the network administration	n = 319		
	\bar{X}	S.D	Opinion levels
1. Leadership	4.33	0.70	High
2. Policy and Strategy	4.33	0.69	High
3. People	4.14	0.87	High
4. Partnerships and Resources	4.17	0.79	High
Total	4.24	0.77	High

Table 2 indicates that the overall opinions of Rajabhat university personnel toward the administration of the Central region Rajabhat university group network is quite high ($\bar{X} = 4.24$). When considered individually, the means for each factor range from 4.14 to 4.33 with the highest means in Factor 1 - Leadership ($\bar{X} = 4.33$), followed by Factor 2 - Policy and strategy

($\bar{X} = 4.33$) while Factor 3 – People has the lowest means ($\bar{X} = 4.14$). Implementation of the model must adopt the P-D-C-A cycle for quality control. The outcome of the proposed network administration model is an efficient higher education network administration.

2. Network administration model of the Central region Rajabhat university group

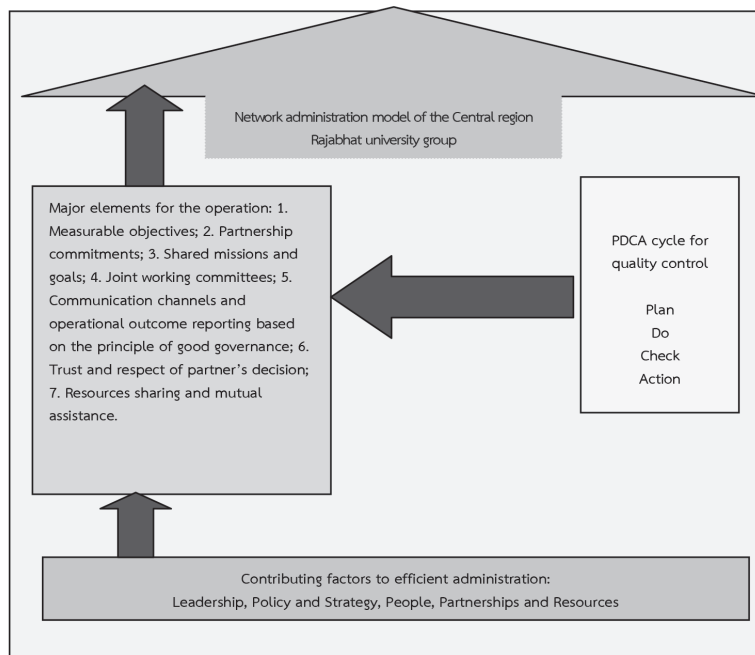


Figure 2: Network administration model of the Central region Rajabhat university group

In Figure 2, the network administration model of the Central region Rajabhat university group can be described as follows:

Network administration of the Central region Rajabhat university group This network is an alliance of a group of Rajabhat universities for the purposes of academic

development, educational management resource sharing, and cooperation in the development of research personnel in community development researches. The network consists of Phranakhon Rajabhat University, Chandrakasem Rajabhat University, Thepsatri Rajabhat University, Phranakhon Si Ayutthaya Rajabhat University,

Valaya Alongkorn Rajabhat University, Suan Sunadha Rajabhat University, and Suan Dusit Rajabhat University. It was established under the Thai higher education network development policy to solve current academic problems in Thai higher educational institutes regarding a shortage of teaching personnel, appropriate incentives to attract Ph.D. holders to a teaching career in higher education, and development of appropriate higher education information systems.

Administration of the Central region Rajabhat university group network must rely on the following major elements:

1. **Measurable objectives based on the operational** concept of setting up measurable academic and research objectives for instructional management. They include management processes for the improvement and promotion of instructor's teaching activities and student's learning activities.
2. **Partnership commitments based on the operational** concept of organizing bonding activities among network members to create a sense of partnership that will lead to mutual assistance and resource sharing.
3. **Shared missions and goals based** on the operational concept of setting up mutual network administrative missions and goals in order to achieve the objectives of resource sharing for academic development.
4. **A**

joint working committee based on the operational concept of efficient administrative and academic quality control through the setting up of a joint working committee.

5. **Establishing communication channels and operational outcome reporting based** on the operational concept of good governance network to achieve efficient and quality performance.
6. **Establishing trust and respect of partner's decisions based** on the operational concept that such trust and respect will lead to effective academic development through resource sharing.
7. **Resource sharing and mutual assistance based** on the operational concept that sharing and mutual assistance will minimize personnel, durable assets, and information system development budget.

For more efficient network administration and academic quality control. Implementation of all of these elements must take into consideration the contributing factors to efficient network administration such as leadership, policy and strategy, people, partnership and resources. Implementation of this administration model must adopt the P-D-C-A cycle for quality control. The outcome of the proposed network administration model is an efficient higher education network administration.

Research Recommendations

In order to achieve efficient administration of higher educational institutes, further studies should be conducted on the following aspects:

1. Evaluation and monitoring processes of the projects implemented by the Central region Rajabhat university group network regarding 1. Instruction; 2. Academic and research works; 3. Academic and technological services; 4. Services to local communities; 5. Network publicity. Operational evaluation and monitoring are essential tasks that need to be carried out to ensure the efficiency and effectiveness of educational management in higher education institutes.

2. Personnel training processes and techniques related to the Central region Rajabhat university group network administration. Studies on such issues

will create a better understanding of the organizational goals and uniform attitudes toward the network's operations. They should include the network's performance in 1. Instruction; 2. Academic and research works; 3. Academic and technological services; 4. Services to local communities; and 5. Network publicity.

3. Knowledge management models and processes of the Central region Rajabhat university group network regarding 1. Instruction; 2. Academic and research works; 3. Academic and technological services; 4. Services to local communities; 5. Network publicity. Available performance reports of completed projects should be compiled by their categories and input into database systems so that such body of knowledge can be used for more efficient administration of the Central region Rajabhat university group network.

References

- Amalya L. Oliver, (1998). Networking Network Studies: An Analysis of Conceptual Configurations in the Study of Inter-organizational Relationships. *Organization Studies*, Vol. 19, No. 4, 549-583.
- Andrew Charlesworth, (2008). *Consortium Agreements*. Centre for IT & Law, University of Bristol. Vol. 5, 1-11.
- Arthur L. Sherwood. Susan B. Butts. S. LeventKacar. Partnering for Knowledge: Learning Framework for University-Industry Collaboration. Submitted to the Midwest Academy of Management 2004 Annual Meeting.

- Barnard, c.i. 1938. *The Functions of the Executive*; Harvard University Press Cambridge, MA. Thirtieth Anniversary Edition.
- Blake, R.R. Mouton, J.S. and William, M.S. (1981). *Academic Administration Grid*. San Francisco: Jossey – Bass.
- Bourgeois, L.J. (1999). *Strategic Management: A Managerial Perspective*. Texas: The Dryden Press.
- Burke, Adam. (1999). *Communications & Development: a practical guide*. London: Social Development Division Department for International Development,
- Dan Thomsen, Dick O'Brien, and Jessica Bogle. (1998). *Role Based Access Control Framework for Network Enterprises*. Secure Computing Corporation. 2675 longLake Road Roseville, MN 55113.
- David, F.R. (2001). *Strategic Management: concepts*. New York: Prentice-Hall,
- Edward L Bernays. (1928). *PROPAGANDA*. New York.
- Lawshe, CH. (1975). *A Quality Approach to Content Validity Personnel Psychology*. 28, 563-575.
- Office of the Education Council. (2003). *New Models for the Administration of Higher Educational Institutes*. Bangkok: Chulalongkorn University Printing House.
- The Higher Education Commission(OHEC), *Manual for the Operation of Higher Education Development Networks*. 2008.The Bureau of Higher Education Collaboration and Promotion. Bangkok. 64 pages
- The Higher Education Commission(OHEC), *Supplementary documents for the Higher Education Network Meeting* on 8 August 2006, The Ambassador Hotel, Bangkok.
- The Higher Education Commission(OHEC), *Supplementary documents for the Higher Education Network Administration Meeting* on 1 September 2006, Pathumwan Princess Hotel, Bangkok. 64 pages

ผู้เขียน

**ผู้ช่วยศาสตราจารย์ ดร. วิวัฒน์ คลังวิจิตร คณะเทคโนโลยีอุตสาหกรรม มหาวิทยาลัยราชภัฏ
วไลยอลงกรณ์**