

3-1-2017

Localized histiocytic sarcoma in a captive capybara (*Hydrochoerus hydrochaeris*)

Saralee Srivorakul

Kittikorn Boonsri

Thewarach Vechmanus

Pinich Boonthong

M. Gerard O'Sullivan

See next page for additional authors

Follow this and additional works at: <https://digital.car.chula.ac.th/tjvm>



Part of the [Veterinary Medicine Commons](#)

Recommended Citation

Srivorakul, Saralee; Boonsri, Kittikorn; Vechmanus, Thewarach; Boonthong, Pinich; O'Sullivan, M. Gerard; and Pringproa, Kidsadagon (2017) "Localized histiocytic sarcoma in a captive capybara (*Hydrochoerus hydrochaeris*)," *The Thai Journal of Veterinary Medicine*: Vol. 47: Iss. 1, Article 6.

Available at: <https://digital.car.chula.ac.th/tjvm/vol47/iss1/6>

This Short Communication is brought to you for free and open access by the Chulalongkorn Journal Online (CUJO) at Chula Digital Collections. It has been accepted for inclusion in The Thai Journal of Veterinary Medicine by an authorized editor of Chula Digital Collections. For more information, please contact ChulaDC@car.chula.ac.th.

Localized histiocytic sarcoma in a captive capybara (*Hydrochoerus hydrochaeris*)

Authors

Saralee Srivorakul, Kittikorn Boonsri, Thewarach Vechmanus, Pinich Boonthong, M. Gerard O'Sullivan, and Kidsadagon Pringproa

Localized histiocytic sarcoma in a captive capybara (*Hydrochoerus hydrochaeris*)

Saralee Srivorakul¹ Kittikorn Boonsri¹ Thewarach Vechmanus² Pinich Boonthong³

M. Gerard O'Sullivan⁴ Kidsadagon Pringproa^{1,5*}

Abstract

An irregular, subcutaneous mass (2x3x2 cm) located between the first and second digits of the left hindlimb of a nine-year-old, male, captive capybara (*Hydrochoerus hydrochaeris*) was biopsied. Microscopically, the mass scattered throughout the dermis. The neoplastic cells were arranged in solid-sheet patterns and comprised of pleomorphic histiocytic cells with pleomorphic nuclei and abundant eosinophilic cytoplasm. Mitotic figures were 2-3 cells/HPF. Numerous, multinucleated, giant cells, up to 10 nuclei/cells, were also prominently observed and found scattered throughout the mass. Immunohistochemically, the neoplastic cells were strongly positive for vimentin and ionized calcium-binding adaptor molecule 1 (Iba-1), while immunoreactivity for cytokeratin was negative. Based on histopathological and immunohistochemical characterizations, localized histiocytic sarcoma was diagnosed.

Keywords: Capybara, histiocytic sarcoma, *Hydrochoerus hydrochaeris*

¹Veterinary Diagnostic Laboratory, Faculty of Veterinary Medicine, Chiang Mai University, Chiang Mai, 50100 Thailand

²Chiang Mai Zoo, Suthep, Muang, Chiang Mai, 50200 Thailand

³Department of Companion Animal and Wildlife Clinic, Faculty of Veterinary Medicine, Chiang Mai University, Chiang Mai, 50100 Thailand

⁴Comparative Pathology Shared Resource, University of Minnesota Masonic Cancer Center, St. Paul, Minnesota, 55108 USA

⁵Department of Veterinary Biosciences and Veterinary Public Health, Faculty of Veterinary Medicine, Chiang Mai University, Chiang Mai, 50100 Thailand

*Correspondence: kidsadagon.p@cmu.ac.th

Introduction

Histiocytic proliferative disorders are common skin disorders in animals that mostly involve the skin, alone or with other organs (Moore, 2014). Histiocytes are a subset of leukocytes that differentiated from CD34⁺ stem cells into macrophages and several dendritic cell (DC) lineages (Fulmer and Mauldin, 2007). In animals, canine histiocytic disorders have been classified into three categories according to their clinical behavior and pathological features, including reactive histiocytosis (cutaneous and systemic forms), cutaneous histiocytoma, and histiocytic sarcoma (localized and disseminated forms) (Affolter and Moore, 2002; Fulmer and Mauldin, 2007; Moore, 2014). Cutaneous histiocytoma is a common, benign, cutaneous neoplasm of dogs, in which the lesions have an epidermal focus ("top-heavy"), and most of the tumors spontaneously regress (Moore, 2014). The lesions of cutaneous reactive histiocytosis are mostly identical to histiocytoma, however, cytological atypia are rare, and most of the lesions are focused on mid-dermis to subcutis ("bottom heavy") (Affolter and Moore, 2002; Moore, 2014). The lesions are more complicated in histiocytic sarcoma in which the tumors behave aggressively, and multiple organs are usually involved (Affolter and Moore, 2002; Moore, 2014; Moore and Rosin, 1986). Until recently, most reports of animal histiocytic disorders have involved domestic animals, including dog, cat, pig, rabbit, cow and horse (Helie et al., 2014; Leissingner et al., 2013; Matsuda et al., 2010; Moore, 2014; Paciello et al., 2013). In the present study, we describe histiocytic sarcoma in a capybara (*Hydrochoerus hydrochaeris*), the world's largest extant rodent (Hamano et al., 2014), raised in captivity in a zoo.

Materials and Methods

A nine-year-old, male, captive capybara (*Hydrochoerus hydrochaeris*) presented with a large, multinodular, firm, skin-colored mass located between the first and second digit of the left hindlimb (Fig. 1a). The mass had grown for 12 months with no obvious lymph node enlargement, skin ulceration, or alteration of animal movement, until the zoo keeper recognized an increase in the size of the mass. The zoo veterinarian performed a cytological examination and diagnosed the lesion as undifferentiated sarcoma of mesenchymal origin. Thereafter, radiographic diagnosis indicated an increase in the radiopacity of the mass (Fig. 1b). The veterinarian then decided to surgically remove the mass, which was submitted for histopathological diagnosis at the Veterinary Diagnostic Laboratory, Faculty of Veterinary Medicine, Chiang Mai University. A representative biopsy specimen of the mass was fixed in 10% neutral buffered formalin, routinely embedded in paraffin, and 4- μ m thick sections were stained with hematoxylin and eosin (H&E). After histological examination, periodic acid Schiff (PAS) and acid-fast staining were performed. The sections were also subjected to immunohistochemical labeling using an avidin-biotin complex immunoperoxidase technique (Vector Laboratories Inc., Burlingame, California, USA), as previously described (Pringproa et al., 2015), with the

primary antibodies against cytokeratin (1:200; AE1/AE3, Diagnostic BioSystems, Pleasanton, California, USA), vimentin (1:200; Diagnostic BioSystems, Pleasanton, California, USA), and ionized calcium-binding adaptor molecule 1 (Iba-1, 1:400; EMD Millipore, Darmstadt, Germany). A 3, 3'-diaminobenzidine (DAB) solution was used as the chromogen. The nuclei were counterstained with Mayer's hematoxylin.

Results and Discussion

Gross examination of the lesion revealed it to be a reddish, solitary, multinodular mass with dimensions of approximately 2x3x2 cm (Fig. 1c). Histologically, the mass scattered throughout the dermis, and was comprised of round to polygonal neoplastic cells with abundant eosinophilic cytoplasm that were arranged in sheets or a solid pattern (Fig. 1d). Mitotic figures were 2-3 cells/HPF. Numerous, multinucleated, giant cells, up to 10 nuclei/cells, were also prominently observed and found scattered throughout the mass (Fig. 1e). Lymphocytic infiltration and necrotic areas were randomly seen. The acid-fast and PAS stains showed no evidence of acid-fast bacteria, fungi, or protozoa. Immunohistochemically, the tumor cells were negative for cytokeratin (Fig. 1f), but strongly positive for vimentin (Fig. 1g) and Iba-1 (Fig. 1h). Based on histopathology and immunohistochemistry, a localized histiocytic sarcoma was diagnosed.

Histiocytic proliferative disorders are derived from two major lineages, including monocyte-macrophage and dendritic or Langerhans cells (Moore, 2014). Tumors originating from a macrophage origin are characterized by immunocytological labeling with CD204, lysozyme and iNOS (Helie et al., 2014), while dendritic cells use S-100 and CD208 (Helie et al., 2014; Moore, 2014). Although E-cadherin has also been used to characterize cells originated from the dendritic cell lineages, it has been observed in other round cell tumors, such as plasmacytomas, epitheliotropic lymphomas and mast cell tumor (Ramos-Vara and Miller, 2011). Therefore, E-cadherin is likely not sensitive enough to distinguish histiocytic tumors from other round cell tumors (Ramos-Vara and Miller, 2011). On the other hand, Pierezan et al. (2014) demonstrated that Iba-1 was a pan-macrophage marker that did not express in other round cell tumors (Pierezan et al., 2014).

In the present case, localized histiocytic sarcoma was diagnosed based on histopathology and immunohistochemistry. Until recently, only a few reports have described tumors in capybara (*Hydrochoerus hydrochaeris*), including fibrosarcoma and squamous cell carcinoma (Hamano et al., 2014; Stoffregen et al., 1993). Due to the various clinical presentations of histiocytic diseases, the recommended treatment for and survival times with these diseases may vary greatly (Fulmer and Mauldin, 2007). Surgical resection of cutaneous lesions or affected organs (e.g., spleen, liver, lungs) is generally not recommended, unless it will provide some palliative benefit (Coomer and Liptak, 2008). Although chemotherapy is recommended, few reports of successful treatment

exist (Coomer and Liptak, 2008). Moreover, differentiating histiocytic tumors from other proliferative disorders is important, because of differences in prognosis and therapeutic protocol (Palmeiro et al., 2007). Therefore, routinely observing

clinical presentation, histopathology, and immunohistochemistry of lesions is essential for veterinarians to accurately diagnose histiocytic disease.

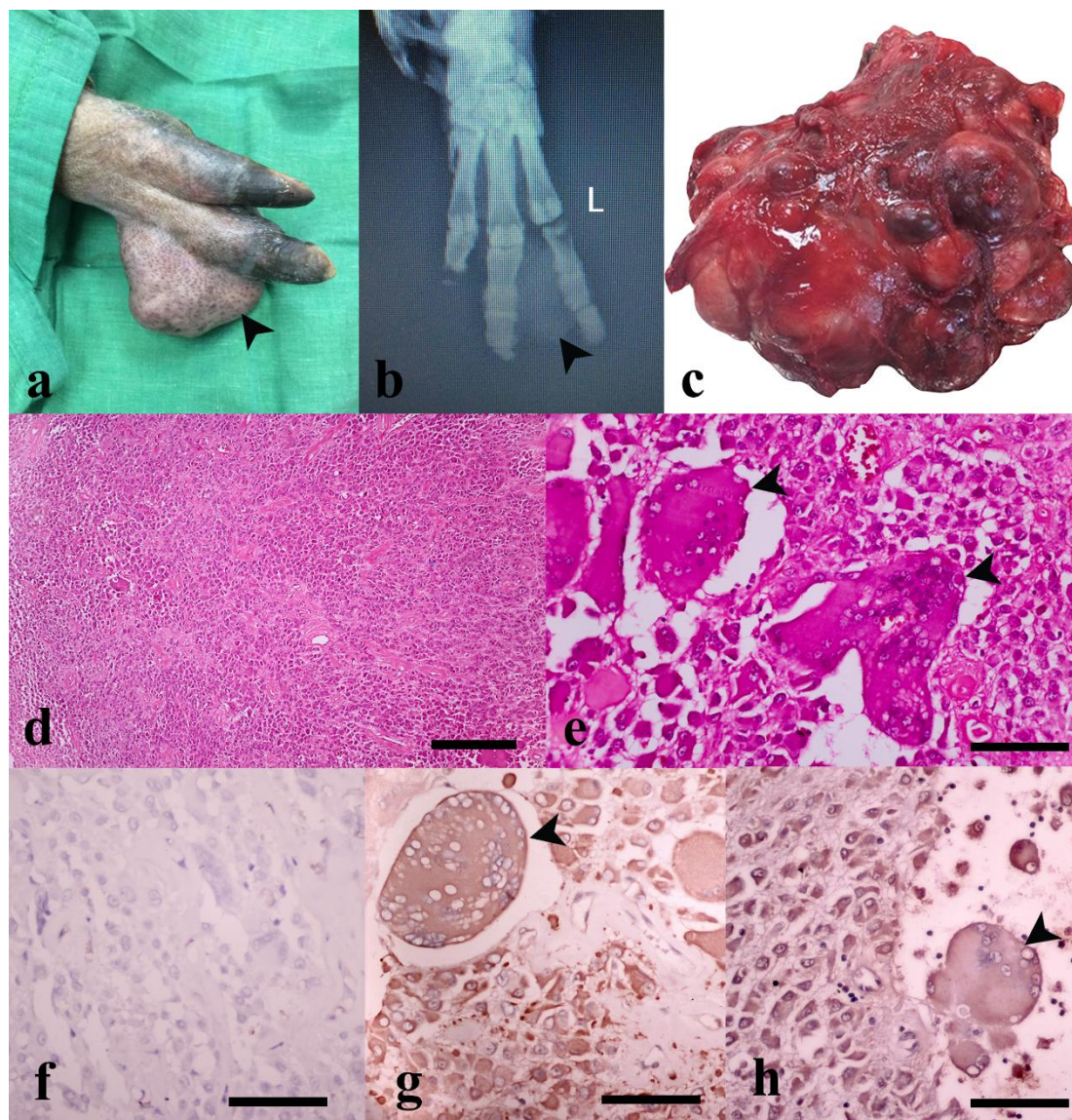


Figure 1 Photomicrograph (a) and radiographic finding (b) of the mass prior to surgical excision. The mass was located between the first and second digit of the left hindlimb, and presented as round, firm and skin-colored (a, arrowhead). Radiographic finding (b) of the mass revealed an increase in the radiopacity of the mass between the first and second digit of the left hindlimb (b, arrowhead). Macroscopically, the mass presented as 2x3x2 cm in size with irregular, multinodular; a firm consistency; and hemorrhaging (c). Histopathologically, the tumor comprised of multinucleated histiocytic cells with pleomorphic nuclei and abundant eosinophilic cytoplasm arranged in solid patterns (d). Some of the histiocytic cells revealed multinucleated giant cells with up to 10 nuclei/cell (e, arrowhead). Many of the neoplastic cells were strongly immunopositive for vimentin (g) and Iba-1 (h), but negative for cytokeratin (f). d and e: H&E stain. Scale bar in d, f-h = 50 μ m, scale bar in e = 200 μ m.

Acknowledgements

The authors would like to thank V. Kochagul for her laboratory assistance.

References

- Affolter VK and Moore PF 2002. Localized and disseminated histiocytic sarcoma of dendritic cell origin in dogs. *Vet Pathol.* 39(1): 74-83.
- Coomer AR and Liptak JM 2008. Canine histiocytic diseases. *Compend Contin Educ Vet.* 30(4): 202-204.
- Fulmer AK and Mauldin GE 2007. Canine histiocytic neoplasia: an overview. *Can Vet J.* 48(10): 1041-1043.
- Hamano T, Terasawa F, Tachikawa Y, Murai A, Mori T, El-Dakhly K, Sakai H and Yanai T 2014. Squamous cell carcinoma in a capybara (*Hydrochoerus hydrochaeris*). *J Vet Med Sci.* 76(9): 1301-1304.

- Helie P, Kiupel M and Drolet R 2014. Congenital cutaneous histiocytosis in a piglet. *Vet Pathol.* 51(4): 812-815.
- Leissing M, Brandao J, Wakamatsu N, Le Roux A, Rich G and Gaunt S 2013. Pulmonary histiocytic sarcoma in a rabbit. *Vet Clin Pathol.* 42(3): 364-367.
- Matsuda K, Nomoto H, Kawamura Y, Someya Y, Koiwa M and Taniyama H 2010. Hemophagocytic histiocytic sarcoma in a Japanese black cow. *Vet Pathol.* 47(2): 339-342.
- Moore PF 2014. A review of histiocytic diseases of dogs and cats. *Vet Pathol.* 51(1): 167-184.
- Moore PF and Rosin A 1986. Malignant histiocytosis of Bernese mountain dogs. *Vet Pathol.* 23(1): 1-10.
- Paciello O, Passantino G, Costagliola A, Papparella S and Perillo A 2013. Histiocytic sarcoma of the nasal cavity in a horse. *Res Vet Sci.* 94(3): 648-650.
- Palmeiro BS, Morris DO, Goldschmidt MH and Mauldin EA 2007. Cutaneous reactive histiocytosis in dogs: a retrospective evaluation of 32 cases. *Vet Dermatol.* 18(5): 332-340.
- Pierezan F, Mansell J, Ambrus A and Rodrigues Hoffmann A 2014. Immunohistochemical expression of ionized calcium binding adapter molecule 1 in cutaneous histiocytic proliferative, neoplastic and inflammatory disorders of dogs and cats. *J Comp Pathol.* 151(4): 347-351.
- Pringproa K, Madarame H, Sritun J, Bumpenpol P, Pedsri P, Somgird C and Thitaram C 2015. Histopathological and Immunohistochemical Characterization of Spontaneous Uterine Leiomyomas in Two Captive Asian Elephants. *Thai J Vet Med.* 45(2): 289-294.
- Ramos-Vara JA and Miller MA 2011. Immunohistochemical expression of E-cadherin does not distinguish canine cutaneous histiocytoma from other canine round cell tumors. *Vet Pathol.* 48(3): 758-763.
- Stoffregen DA, Prowten AW, Steinberg H and Anderson WI 1993. A fibrosarcoma in the skeletal muscle of a capybara (*Hydrochoerus hydrochaeris*). *J Wildl Dis.* 29(2): 345-348.

บทคัดย่อ

มะเร็งฮิสทีโอไซต์ที่เกิดแบบเฉพาะที่ในคางคกบาราเลียง

สราลี ศรีวรกุล¹ กิตติกร บุญศรี¹ เทวราช เวชมนัส² พินิช บุญทอง³
 เอ็ม เจอรราร์ด โอ ซัลลิแวน⁴ กฤษณากรณ์ พริ้งเพราะ^{1,5*}

คางคกบารา (*Hydrochoerus hydrochaeris*) เพศผู้ อายุ 9 ปี พบก้อนเนื้อขนาด 2x3x2 เซนติเมตร บริเวณเนื้อเยื่อใต้หนังระหว่าง นิ้วเท้าที่หนึ่งและสองของขาหลังซ้าย ก้อนเนื้อนี้มีลักษณะแน่น และผิวขรุขระ จากลักษณะทางจุลพยาธิวิทยา พบเซลล์ฮิสทีโอไซต์ที่มีภาวะ หลากรูป ร่วมกับนิวคลีโอที่มีภาวะหลากหลายและไซโตพลาสติดสีชมพู มีการจัดเรียงตัวอยู่ในรูปแบบแน่นและเป็นแผ่น ร่วมกับพบการแทรก ของเซลล์ขนาดใหญ่ที่มีหลายนิวเคลียสซึ่งบางเซลล์พบได้มากถึง 10 นิวเคลียสต่อเซลล์ พบไมโทติคพีเกอร์จำนวน 2 ถึง 3 เซลล์ต่อกำลังขยาย กล้องจุลทรรศน์ขนาด 100x เมื่อทำการตรวจมะเร็งด้วยวิธีอิมมูโนฮิสโตเคมี พบว่ามะเร็งให้ผลบวกต่อแอนติบอดีชนิดไวมินติน และไอ บี เอ วัน จากการตรวจทางจุลพยาธิวิทยา และวิธีอิมมูโนฮิสโตเคมี จึงวินิจฉัยก้อนเนื้อดังกล่าวเป็นมะเร็งฮิสทีโอไซต์ที่มีจุดกำเนิดมาจากเซลล์มีเซนคัยม การศึกษาในรายงานนี้เป็นกรณีศึกษาแรกที่พบมะเร็งชนิดดังกล่าวในคางคกบาราเลียง

คำสำคัญ: คางคกบารา มะเร็งฮิสทีโอไซต์

¹หน่วยชั้นสูตโรคลัตว์ ศูนย์บริการสุขภาพสัตว์ คณะสัตวแพทยศาสตร์ มหาวิทยาลัยเชียงใหม่ ต.แม่เหียะ อ.เมือง จ.เชียงใหม่ 50100

²สวนสัตว์เชียงใหม่ ต.สุเทพ อ.เมือง จ.เชียงใหม่ 50200

³ภาควิชาคลินิกสัตว์เลี้ยงและสัตว์ป่า คณะสัตวแพทยศาสตร์ มหาวิทยาลัยเชียงใหม่ ต.แม่เหียะ อ.เมือง จ.เชียงใหม่ 50100

⁴แหล่งเผยแพร่ข้อมูลพยาธิวิทยาเปรียบเทียบ ศูนย์ความช่วยเหลือทางด้านมะเร็งระหว่างประเทศ มหาวิทยาลัยมินนิโซตา เมืองเซนต์พอล รัฐมินนิโซตา ประเทศสหรัฐอเมริกา 55180

⁵ภาควิชาชีวศาสตร์ทางสัตวแพทย์และสัตวแพทย์สาธารณสุข คณะสัตวแพทยศาสตร์ มหาวิทยาลัยเชียงใหม่ ต.แม่เหียะ อ.เมือง จ.เชียงใหม่ 50100

*ผู้รับผิดชอบบทความ E-mail: kidsadagon.p@cmu.ac.th