

The Thai Journal of Veterinary Medicine

Volume 34
Issue 1 *March, 2004*

Article 4

3-1-2004

What is Your Diagnosis?

Pranee Tuntivanich

Follow this and additional works at: <https://digital.car.chula.ac.th/tjvm>



Part of the [Veterinary Medicine Commons](#)

Recommended Citation

Tuntivanich, Pranee (2004) "What is Your Diagnosis?," *The Thai Journal of Veterinary Medicine*: Vol. 34: Iss. 1, Article 4.

Available at: <https://digital.car.chula.ac.th/tjvm/vol34/iss1/4>

This Other is brought to you for free and open access by the Chulalongkorn Journal Online (CUJO) at Chula Digital Collections. It has been accepted for inclusion in The Thai Journal of Veterinary Medicine by an authorized editor of Chula Digital Collections. For more information, please contact ChulaDC@car.chula.ac.th.

WHAT IS YOUR DIAGNOSIS

Pranee Tuntivanich*

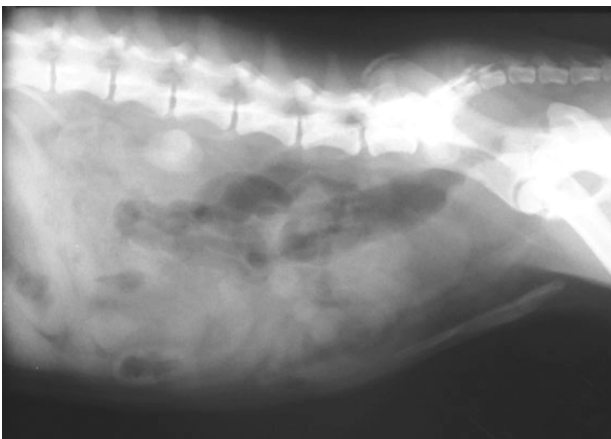


Figure 1 Lateral view of the abdomen of a male dog.

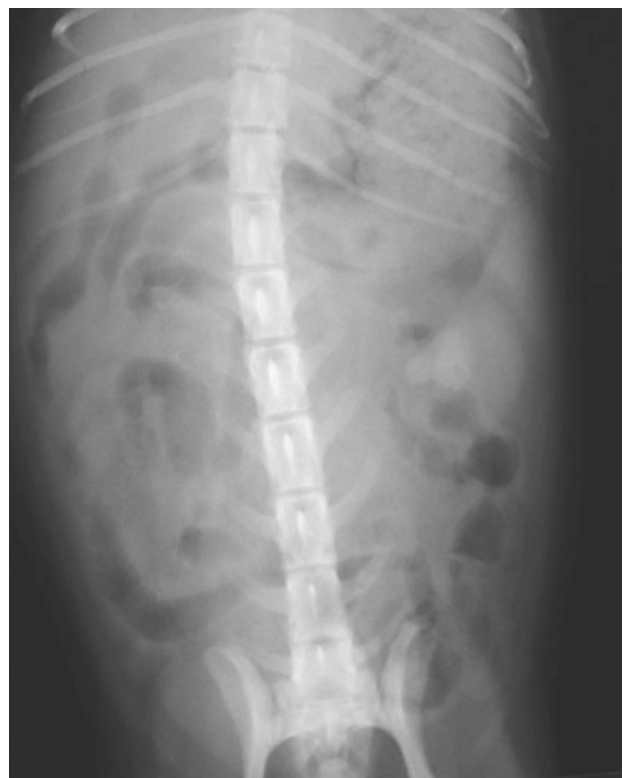


Figure 2 Ventro-dorsal view of the abdomen of the same dog.

History :

A 5-years old male Shitzu dog showed symptoms of haematuria and some cellulitis around the prepuce area over last three months.

Radiographs were taken in the ventro-dorsal and lateral views of the abdomen.

Give your diagnosis and turn to the next page.

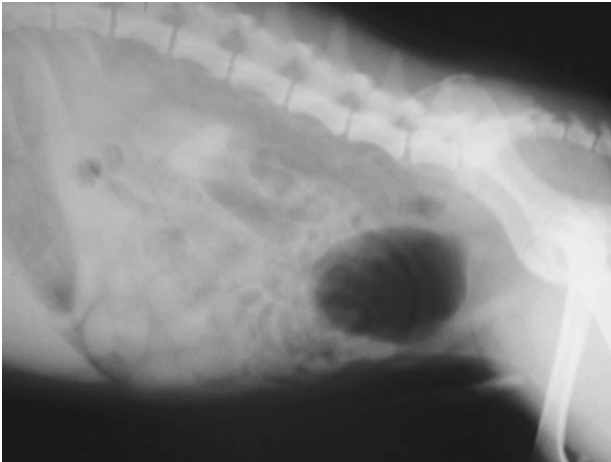


Figure 3 Pneumocystography of the same dog.

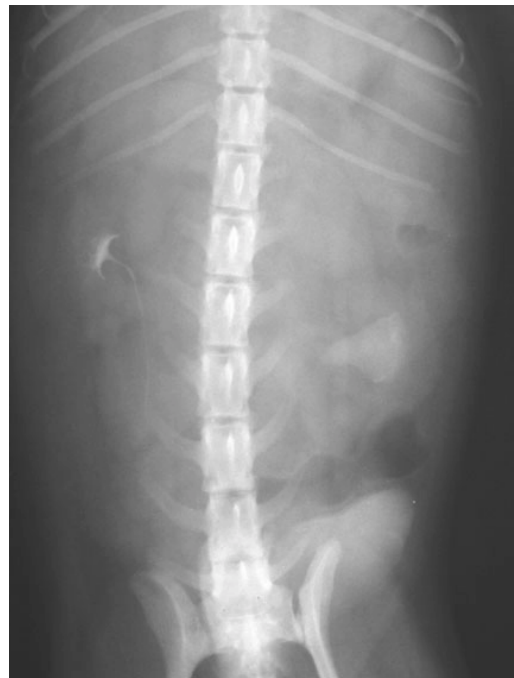


Figure 4 Excretory urography after intravenous pyelography was performed.

Radiographic Diagnosis

- Left renal calculi.
- Cystitis.
- Prostatitis.

Radiographic findings and Comments

The lateral radiograph of the abdomen reveals slight retention of urine in the urinary bladder and enlargement of the prostate gland. There is an opaque radiodense, space occupying mass, 2 x 2 cm. in diameter, ventral to the second and third lumbar vertebra.

The ventro-dorsal radiograph reveals an area of radiopaque material in the middle of the abdomen in the position near the pelvis of the left kidney.

Pneumocystography reveals thickening of the urinary bladder wall, indicating cystitis (Fig. 3). The films were taken at 3, 5, 10 and 30 minutes after intravenous pyelography. A large stone can be observed in the renal pelvis of the left kidney. The right kidney is enlarged but anatomically and functionally normal, 10 minutes after excretory urography (Fig. 4). It has undergone functional and anatomical compensatory hypertrophy.