

The Thai Journal of Veterinary Medicine

Volume 33
Issue 3 September, 2003

Article 1

9-1-2003

What is Your Diagnosis?

Pranee Tuntivanich

Follow this and additional works at: <https://digital.car.chula.ac.th/tjvm>



Part of the [Veterinary Medicine Commons](#)

Recommended Citation

Tuntivanich, Pranee (2003) "What is Your Diagnosis?," *The Thai Journal of Veterinary Medicine*: Vol. 33: Iss. 3, Article 1.

Available at: <https://digital.car.chula.ac.th/tjvm/vol33/iss3/1>

This Other is brought to you for free and open access by the Chulalongkorn Journal Online (CUJO) at Chula Digital Collections. It has been accepted for inclusion in The Thai Journal of Veterinary Medicine by an authorized editor of Chula Digital Collections. For more information, please contact ChulaDC@car.chula.ac.th.

WHAT IS YOUR DIAGNOSIS

Pranee Tuntivanich*

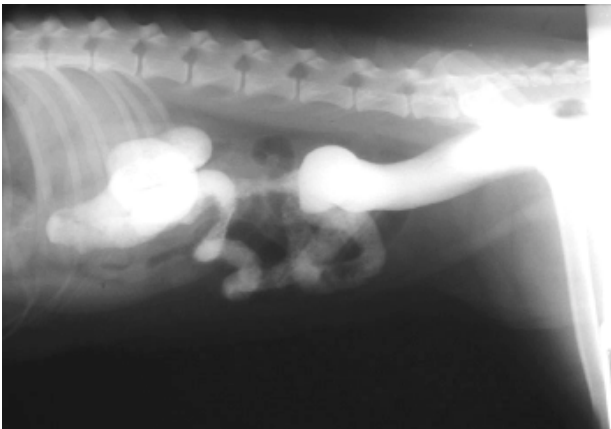


Figure 1 The abdomen of a dog in a lateral position



Figure 2 The ventro-dorsal position of the abdomen of the same dog.

History :

A two year old, female, mixed breed dog was presented suffering from a bloody diarrhoea that had been a problem for a long time. Medical treatments had not improved it. Scout films of the abdomen revealed normal findings.

Special radiographic studies were carried out using a barium enema and radiographs were taken in both the ventro-dorsal and the lateral positions.

Give your diagnosis and turn to the next page.

Radiographic Diagnosis

Stricture of the descending colon.

Radiographic Findings and Comments

The large intestine, caecum and part of distal small intestine were filled with barium in both lateral and ventro-dorsal views of the abdomen. There was a stricture of the descending colon on the left lateral aspect of the abdomen. The barium can be seen to barely pass through the strictured area.

An operation was undertaken and revealed, marked inflammation and swelling of the strictured colon starting from the ascending part to the middle part of descending colon. Enterectomy and enterorrhaphy were performed by removing of the distal part of the ileum, caecum and descending colon. The proximal part of the ileum was connected to the distal part of the descending colon.