

The Thai Journal of Veterinary Medicine

Volume 32
Issue 2 June, 2002

Article 7

6-1-2002

What is Your Diagnosis?

Pranee Tuntivanich

Follow this and additional works at: <https://digital.car.chula.ac.th/tjvm>



Part of the [Veterinary Medicine Commons](#)

Recommended Citation

Tuntivanich, Pranee (2002) "What is Your Diagnosis?," *The Thai Journal of Veterinary Medicine*: Vol. 32: Iss. 2, Article 7.

Available at: <https://digital.car.chula.ac.th/tjvm/vol32/iss2/7>

This Other is brought to you for free and open access by the Chulalongkorn Journal Online (CUJO) at Chula Digital Collections. It has been accepted for inclusion in The Thai Journal of Veterinary Medicine by an authorized editor of Chula Digital Collections. For more information, please contact ChulaDC@car.chula.ac.th.

WHAT IS YOUR DIAGNOSIS

Pranee Tuntivanich

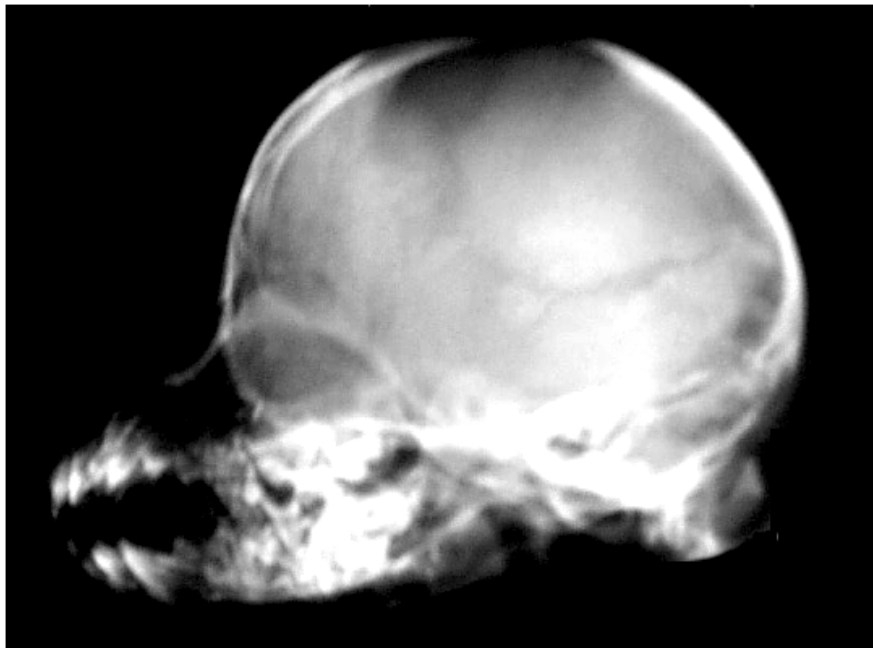


Figure 1 Lateral radiograph of a 4-month-old dog.

History :

A 4-month-old, male, mixed breed dog with a history of skull trauma at the age of two months. Anorexia and nervous signs were observed.

The radiograph was taken in a lateral position to the skull.

Give your diagnosis and turn to page 72.

Radiographic Diagnosis

Hydrocephalus.

Radiographic Findings and Comments

The lateral radiograph of the dog's skull reveals a loss of all normal convolutional markings.

There is a homogenous appearance of both the calvarium and the brain.

The degree of calvarial distortion depends on the amount of fluid that has accumulated. The ventricular size and shape may be assessed using pneumoventriculography.