

The Thai Journal of Veterinary Medicine

Volume 30
Issue 4 December, 2000

Article 3

12-1-2000

ECG Quiz

Chollada Buranakarl

Kris Angkanaporn

Follow this and additional works at: <https://digital.car.chula.ac.th/tjvm>



Part of the [Veterinary Medicine Commons](#)

Recommended Citation

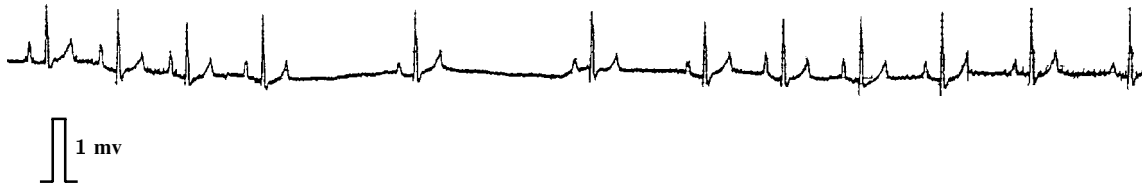
Buranakarl, Chollada and Angkanaporn, Kris (2000) "ECG Quiz," *The Thai Journal of Veterinary Medicine*: Vol. 30: Iss. 4, Article 3.

Available at: <https://digital.car.chula.ac.th/tjvm/vol30/iss4/3>

This Other is brought to you for free and open access by the Chulalongkorn Journal Online (CUJO) at Chula Digital Collections. It has been accepted for inclusion in The Thai Journal of Veterinary Medicine by an authorized editor of Chula Digital Collections. For more information, please contact ChulaDC@car.chula.ac.th.

ECG Quiz

Chollada Buranakarl* Kris Angkanaporn*



Paper speed is 25 mm/sec

A 5 years-old, Pekingese, female dog weighing 5 kg had a history of frequent coughing and panting. Physical examination revealed a CRT of less than 2 sec. A thoracic radiograph showed enlargement of the right heart with lung congestion. Complete blood count (CBC) and serum chemistry profiles were within normal limits.

Heart rate	90 beats/min
P wave	duration 0.04 sec height 0.3 mV
P-R interval	0.12 sec
QRS wave	duration 0.04 sec height 1.0 mV
Q-T interval	0.18 sec

Please make your interpretation and turn to the next page.

* Department of Physiology, Faculty of Veterinary Science, Chulalongkorn University

Respiratory sinus arrhythmia

The rhythm of the heart beat is irregular. Sinus arrhythmia represents alternating periods of slower and more rapid heart rates usually related to respiration. The heart rate accelerates during inspiration and decelerates during expiration. This is due to a changing level of vagal tone. The amplitudes of the P waves were inconsistent while

the P-R interval was constant. During the acceleration phase, the amplitude of the P wave usually increases. This phenomenon is probably due to a shift in the pacemaker indicating that the location of the pacemaker is within the SA node. This characteristic is not considered pathological and does not require treatment.