

6-1-2000

ECG Quiz

Chollada Buranakarl

Kris Angkanaporn

Follow this and additional works at: <https://digital.car.chula.ac.th/tjvm>



Part of the [Veterinary Medicine Commons](#)

Recommended Citation

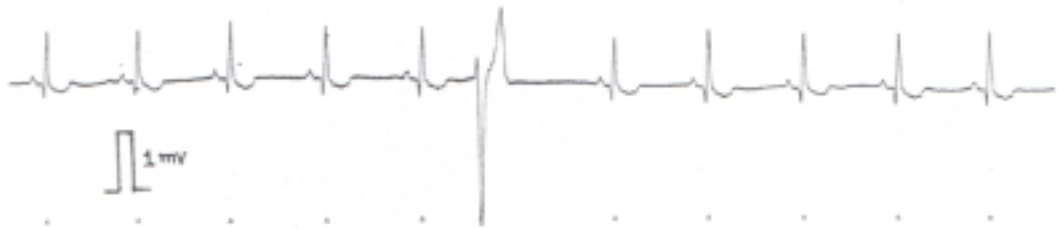
Buranakarl, Chollada and Angkanaporn, Kris (2000) "ECG Quiz," *The Thai Journal of Veterinary Medicine*: Vol. 30: Iss. 2, Article 5.

Available at: <https://digital.car.chula.ac.th/tjvm/vol30/iss2/5>

This Other is brought to you for free and open access by the Chulalongkorn Journal Online (CUJO) at Chula Digital Collections. It has been accepted for inclusion in The Thai Journal of Veterinary Medicine by an authorized editor of Chula Digital Collections. For more information, please contact ChulaDC@car.chula.ac.th.

ECG Quiz

Chollada Buranakarl* Kris Angkanaporn*



Paper speed = 25 mm/sec

A Spitz dog was hospitalized with haematuria and chronic dermatitis. The prostate gland was enlarged. The dog had history of frequent panting. Blood chemistry profiles were considered to be normal.

Heart rate 100 beats/min
P wave duration 0.04 sec height 0.1 mV
P-R interval 0.12 sec
QRS wave duration 0.05 sec height 0.8 mV
Q-T interval 0.18 sec

Please make your interpretation before turning to the next page.

Sinus rhythm with one premature ventricular complex

Normal P-QRS complexes were seen with a constant P-R interval. A premature ventricular complex (PVC) was seen, characterized by the wide and bizarre shape of the QRS complex which was not associated with the P wave. The T wave was discordant when compared to a sinus beat. PVC can be seen in normal

dogs and is not considered pathological unless the frequency is high. The complex in this tracing is called 'premature ventricular complex' since it occurs before normal sinus beat. The pause after the complex called the "compensatory pause" will cause higher ventricular end diastolic volume and the heart will contract more vigorously during the next beat. The cardiac output should not be affected in this situation. No medication is required.