

# The Thai Journal of Veterinary Medicine

---

Volume 9  
Issue 3 September, 1979

Article 3

---

9-1-1979

## What is your Diagnosis

Pranee Tuntivanich

Follow this and additional works at: <https://digital.car.chula.ac.th/tjvm>



Part of the [Veterinary Medicine Commons](#)

---

### Recommended Citation

Tuntivanich, Pranee (1979) "What is your Diagnosis," *The Thai Journal of Veterinary Medicine*: Vol. 9: Iss. 3, Article 3.

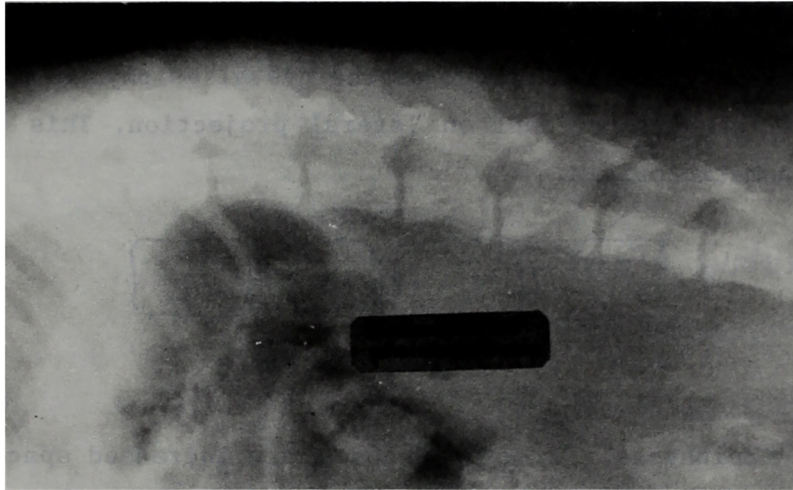
DOI: <https://doi.org/10.56808/2985-1130.1263>

Available at: <https://digital.car.chula.ac.th/tjvm/vol9/iss3/3>

This Article is brought to you for free and open access by the Chulalongkorn Journal Online (CUJO) at Chula Digital Collections. It has been accepted for inclusion in The Thai Journal of Veterinary Medicine by an authorized editor of Chula Digital Collections. For more information, please contact [ChulaDC@car.chula.ac.th](mailto:ChulaDC@car.chula.ac.th).

## WHAT IS YOUR DIAGNOSIS

*Pranee Tuntivanich\**



Lateral position of the vertebral column of a dog.

### **History**

A one-year-old female, mixed breed dog, was hit by a car a day before. The dog can not use the hind limbs. On palpation, the animal shows the symptom of pain when pressing on the lumbar area. Sensory and motor reflexes can not be detected.

Lateral projection of the thoraco-lumbar area was taken.

Give your diagnosis and turn to page 121

---

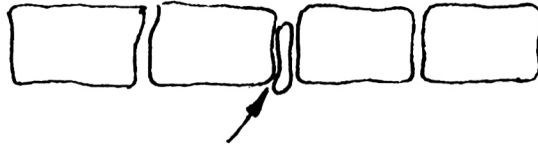
\*Department of Surgery, Faculty of Veterinary Science, Chulalongkorn University.

### **Radiographic Diagnosis**

Fracture of the distal epiphysis of the body of third lumbar vertebra.

### **Radiographic Findings and Comments**

Ventral displacement of the distal epiphysis of the third lumbar vertebra is evident on lateral projection. This evidence is of traumatic origin.



Epiphyseal fracture causes an increased space at the epiphyseal line (arrow) and a narrowing of the intervertebral space between the third and fourth lumbar vertebrae. Any narrowing of the intervertebral space is suggestive of protrusion to the intervertebral disc which can cause paresis or paralysis of the hind quarter.